



On June 2022 we released a new version of reporting tools and data analytics - Stimulsoft 2022.3. In this release we made a lot of new features, changes and improvements of the products of our company.

Main new features: run a new product for data analytics Dashboards.BLAZOR, a new graphic library Stimulsoft.Drawing, GraphQL data adapter, Ribbon chart and much more.

# version 2022.3



# New product – Stimulsoft Dashboards.BLAZOR

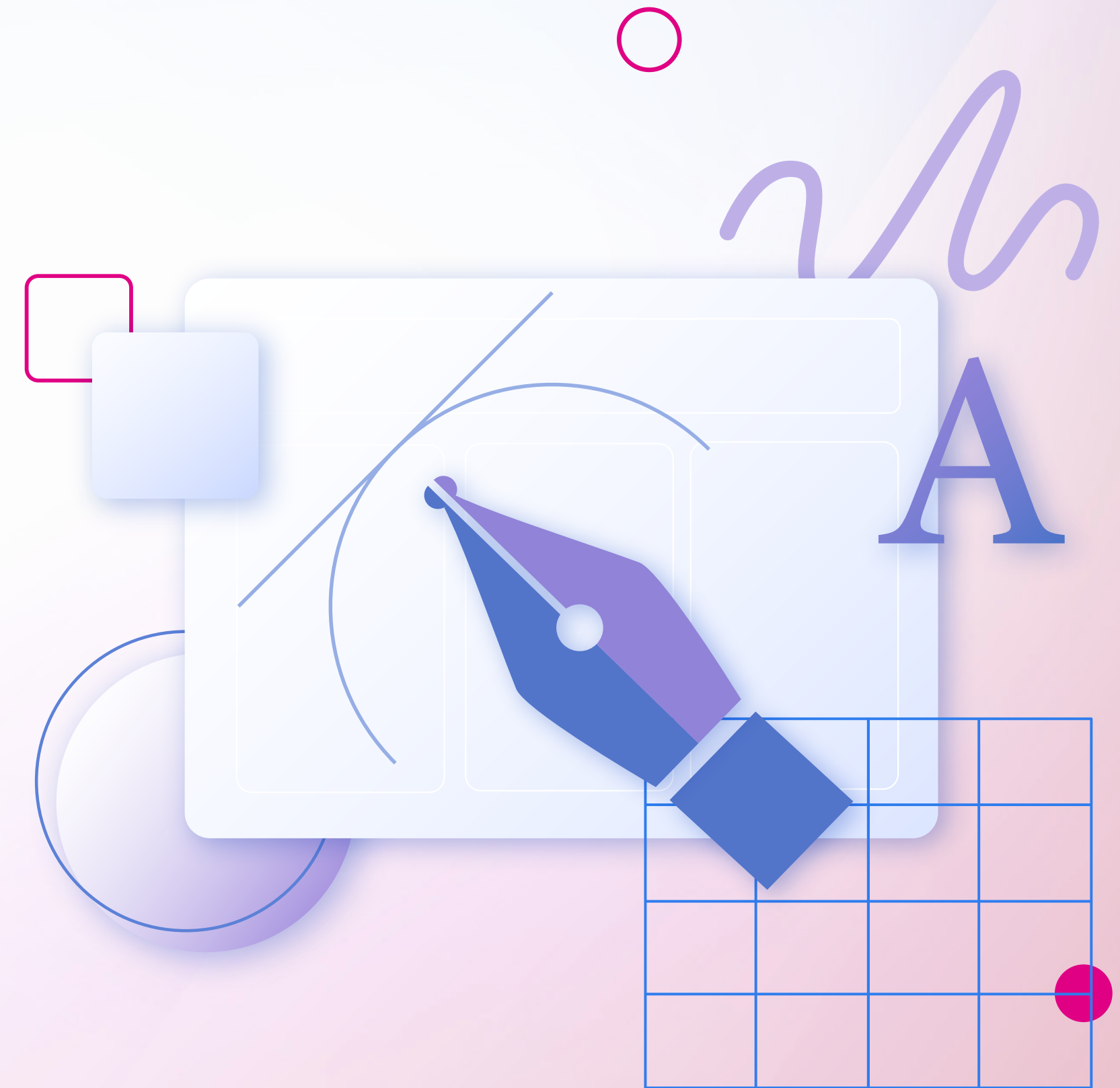
We announce the release of a new product – Stimulsoft Dashboards.BLAZOR. This is a cross-platform solution of data analytics created to integrate the application that works using the Blazor framework. Our product works both on the server (**Blazor Server**) and client (**Blazor WebAssembly**) sides. You may quickly integrate it into any web project. It allows you to display and analyze information from many data sources and has a wide range of components to design dashboards. Also, we have added an ability to save a project with dashboards from the Publish wizard to quickly integrate Stimulsoft components into a Blazor application. This product is available with Stimulsoft Dashboards.WEB subscription.



# New graphics library



We have created the **Stimulsoft.Drawing** – an independent interface of displaying graphical objects for .NET Core components with various versions of framework - **.NET Standard 2.1, .NET Core 3.1, .NET 5.0, .NET 6.0**. This library is also suitable for Blazor components. The GDI+ library is compatible with .NET Core components in the Windows operating system and libgdiplus - Mono Project in other OS. Using the Stimulsoft.Drawing library, the display of graphics in your application won't depend on an operating system.



# Compilation for Blazor



The support of the compilation mode to render reports when using the **Blazor Server** platform is added to the new version. Now you can use all features of the report generator – runtime compilation, functions, publishing reports as classes. Compilation is available on all supported operating systems.

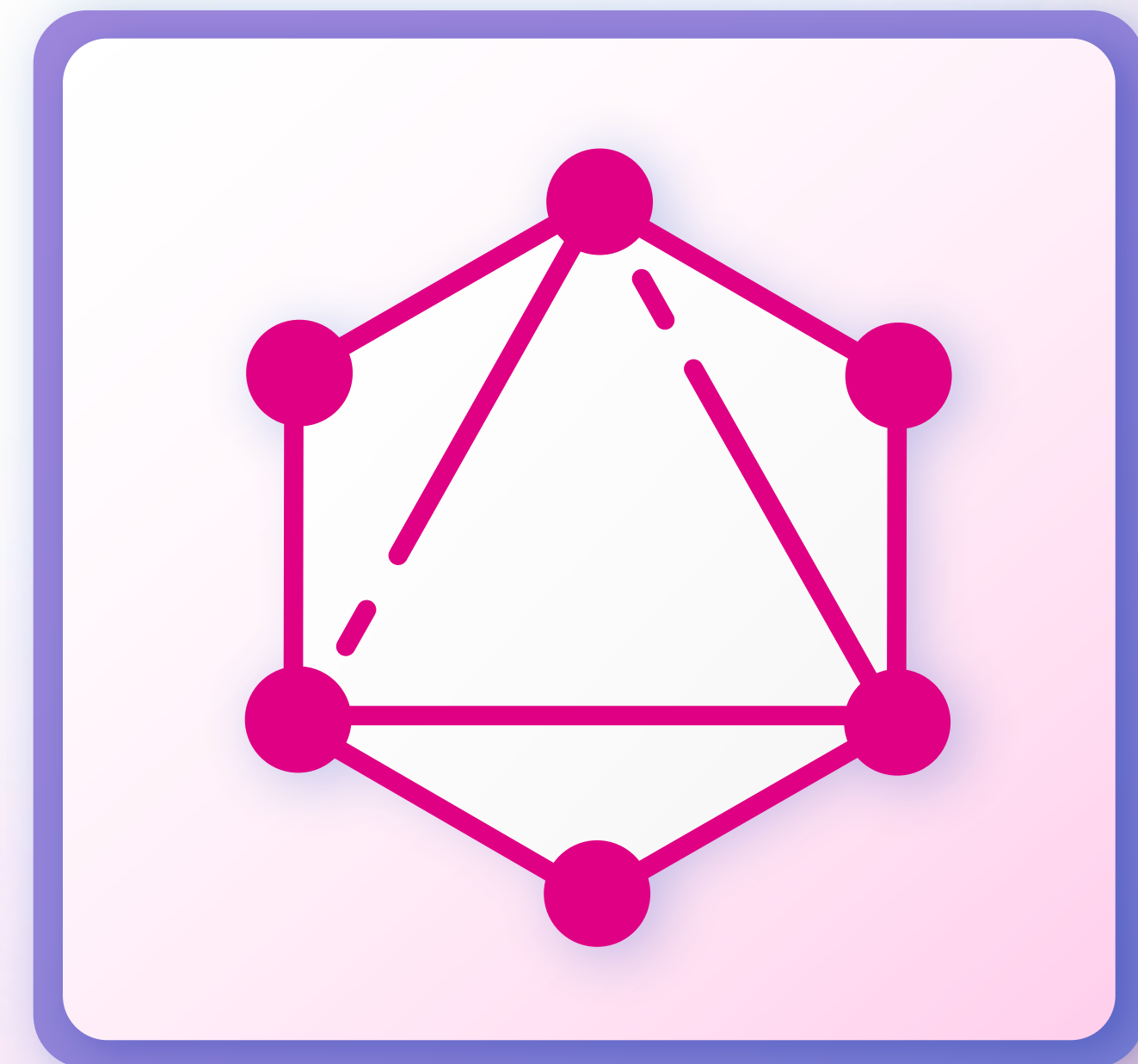




# GraphQL data adapter



Starting with the 2022.3 release, you can get data from various data stores using the **GraphQL** query model. This data source type has a number of advantages over **REST** or **SQL** queries. You should select the GraphQL point from the REST tab in the New Data Source window, specify the URL to a data store, and query text. After getting data, you can create them based on reports and dashboards.



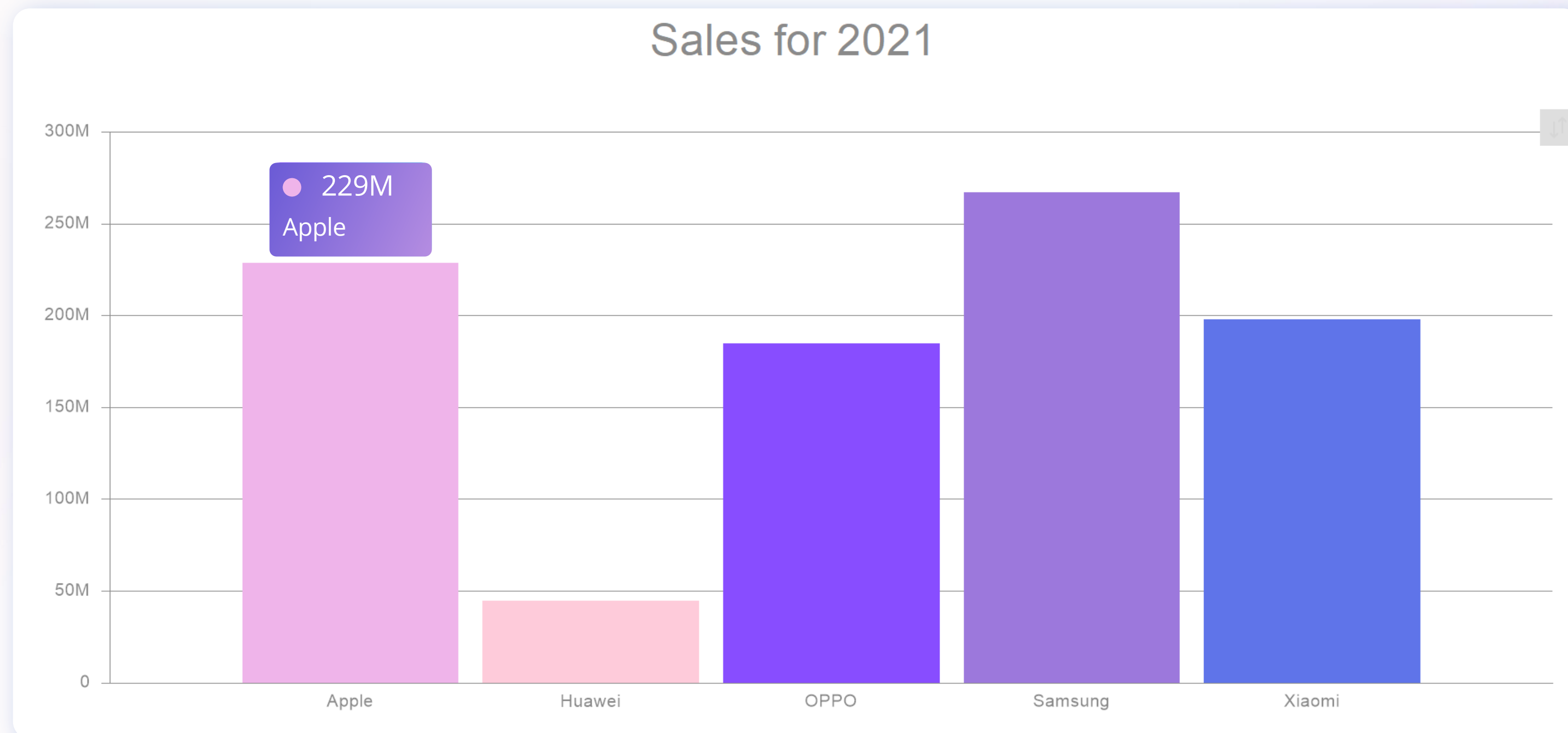
# Ribbon Chart

Another feature of the current release concerns the sphere of analysis and display of data - **Ribbon Chart**. This chart type is an improved version of the **Stacked Column** chart. First, values for each argument are sorted from largest to smallest, i.e., the maximum value is always displayed topmost. It considerably improves analysis and visual perception of the values of a particular argument. Second, a curve is drawn between the values of the arguments, which allows you to estimate the tendencies and trends of indicators when analyzing visually. The chart is available in reports and dashboards, and you may find it in the Histogram category.



# New features for the Tooltip

We have added an ability to visually design the Tooltip element when hovering the cursor for some dashboard elements – Chart, Region Map, Indicator. Tooltips are customized in the Style Designer using properties: Tooltip Brush, Tooltip Text Brush, Tooltip Corner Radius, and Tooltip Border. Now you can design tooltips for your dashboards according to your corporate company style or visual settings of dashboard elements. By the way, there is no separate property that sets the transparency of the tooltip background. But you can set it by specifying the alpha parameter in the color code for the Tooltip Brush property.





# New features of the Pivot Table

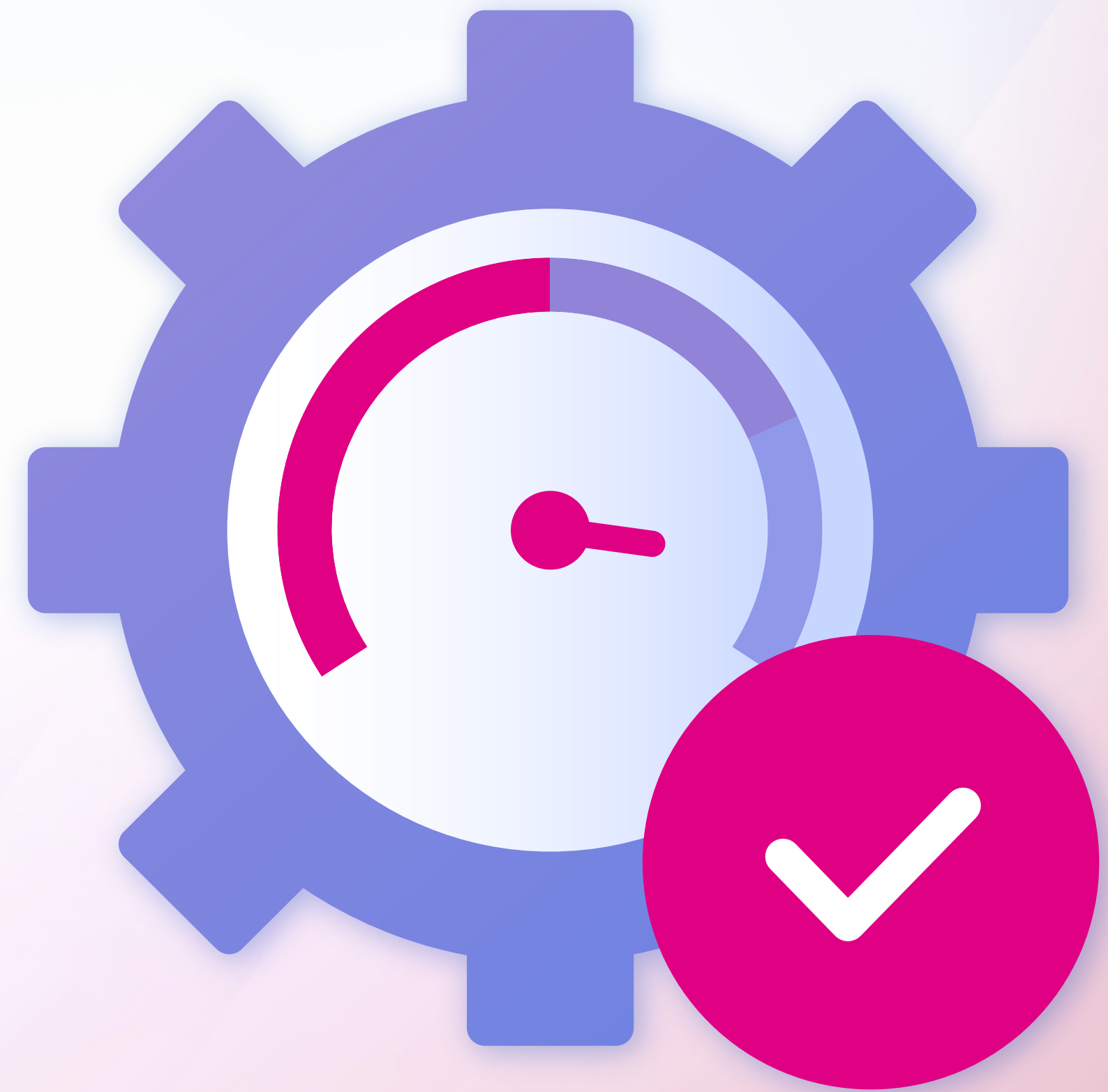
We have added several new features for the Pivot Table in dashboards. First, you can now sort rows and columns in ascending or descending directions. You can do this using the Sort property in the properties panel for the corresponding data fields. Second, you can define an expanded row or column condition when you use drill-down data. The condition to expand rows or columns is carried out in the Expand property editor in the properties panel.

Pivot Table			Wyoming	Wisconsin	WestVirginia	Washington	Virginia	Vermont	Utah
Category Name	Product Name								
McDonald's	Burger King	Sales Volume McDonald's	\$221.28M	\$2.36B	\$698.40M	\$2.25B	\$3.08B	\$207.45M	\$767.5
		Sales Volume Wendy's	\$72.49M	\$289.96M	\$352.09M	\$398.69M	\$1.15B	\$20.71M	\$434.9
		Sales Volume Burger King	\$72.67M	\$464.28M	\$242.23M	\$480.43M	\$823.59M	\$28.26M	\$290.6
	Big Mac	Sales Volume McDonald's	\$73.76M	\$785.99M	\$232.80M	\$751.42M	\$1.03B	\$69.15M	\$255.8
		Sales Volume Wendy's	\$24.16M	\$96.65M	\$117.36M	\$132.90M	\$383.16M	\$6.90M	\$144.9
		Sales Volume Burger King	\$24.22M	\$154.76M	\$80.74M	\$160.14M	\$274.53M	\$9.42M	\$96.8
	French Fries	Sales Volume McDonald's	\$73.76M	\$785.99M	\$232.80M	\$751.42M	\$1.03B	\$69.15M	\$255.8
		Sales Volume Wendy's	\$24.16M	\$96.65M	\$117.36M	\$132.90M	\$383.16M	\$6.90M	\$144.9
		Sales Volume Burger King	\$24.22M	\$154.76M	\$80.74M	\$160.14M	\$274.53M	\$9.42M	\$96.8
	Snack Wrap	Sales Volume McDonald's	\$73.76M	\$785.99M	\$232.80M	\$751.42M	\$1.03B	\$69.15M	\$255.8
		Sales Volume Wendy's	\$24.16M	\$96.65M	\$117.36M	\$132.90M	\$383.16M	\$6.90M	\$144.9
		Sales Volume Burger King	\$24.22M	\$154.76M	\$80.74M	\$160.14M	\$274.53M	\$9.42M	\$96.8
	Total	Sales Volume McDonald's	\$221.28M	\$2.36B	\$698.40M	\$2.25B	\$3.08B	\$207.45M	\$767.5
		Sales Volume Wendy's	\$72.49M	\$289.96M	\$352.09M	\$398.69M	\$1.15B	\$20.71M	\$434.9
		Sales Volume Burger King	\$72.67M	\$464.28M	\$242.23M	\$480.43M	\$823.59M	\$28.26M	\$290.6
Wendy's		Sales Volume McDonald's	\$221.28M	\$2.36B	\$698.40M	\$2.25B	\$3.08B	\$207.45M	\$767.5
		Sales Volume Wendy's	\$72.49M	\$289.96M	\$352.09M	\$398.69M	\$1.15B	\$20.71M	\$434.9
		Sales Volume Burger King	\$72.67M	\$464.28M	\$242.23M	\$480.43M	\$823.59M	\$28.26M	\$290.6
Total		Sales Volume McDonald's	\$663.83M	\$7.07B	\$2.10B	\$6.76B	\$9.23B	\$622.34M	\$2.30
		Sales Volume Wendy's	\$217.47M	\$869.87M	\$1.06B	\$1.20B	\$3.45B	\$62.13M	\$1.30
		Sales Volume Burger King	\$218.01M	\$1.39B	\$726.69M	\$1.44B	\$2.47B	\$84.78M	\$872.0



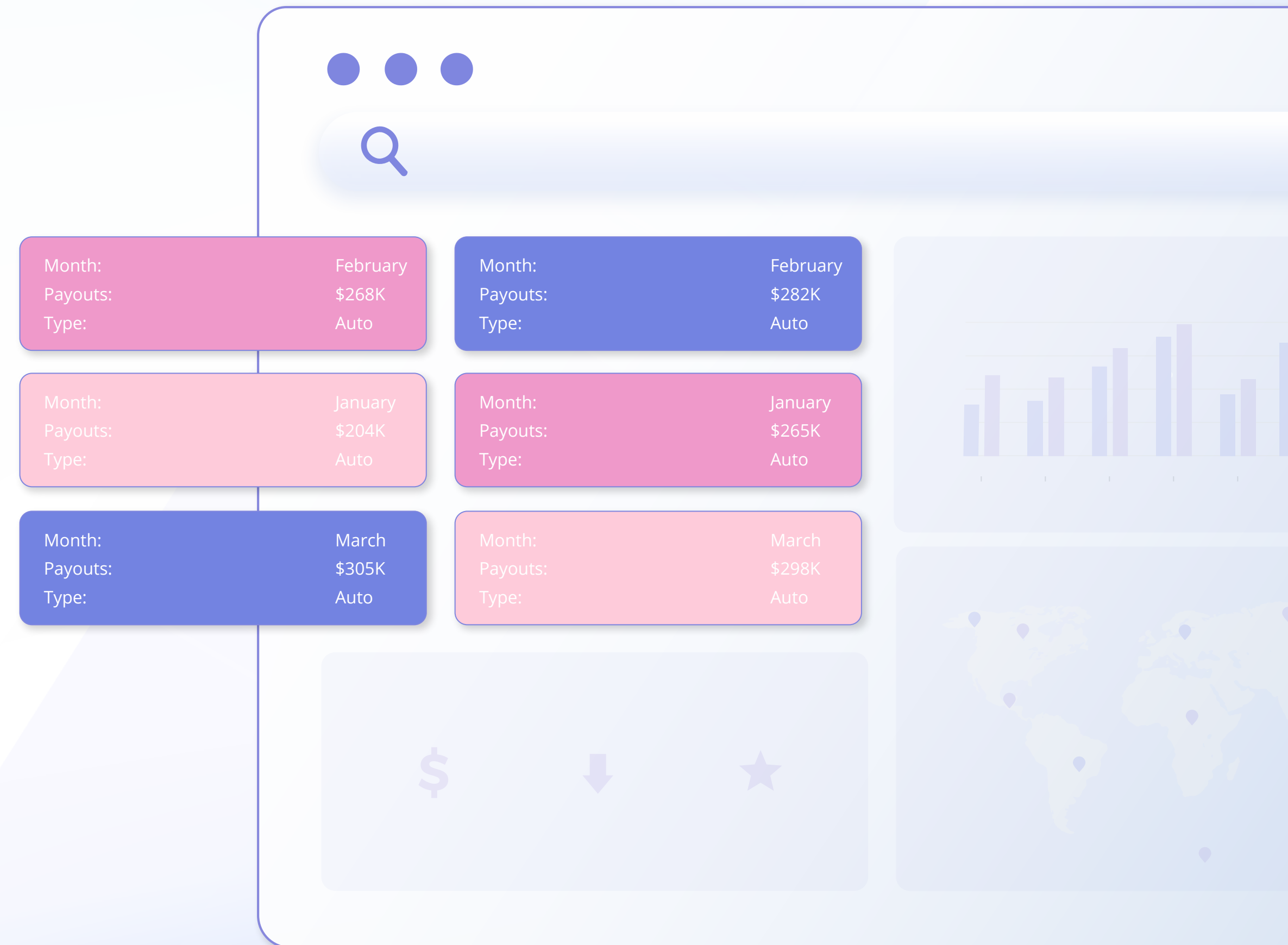
# Optimization of the JS designer

After a deep analysis, as a result of research and comparative tests, we decided to replace the framework for creating a desktop version of the JS report designer. Previously, NW.js was used. Now the standalone JS designer is built using **Electron**. As a result, we were able to optimize the speed of the application, including getting and processing data, report rendering, displaying dashboards, and reducing the application run time.



# New features of the Cards

In spring 2022, we added a new element for dashboards - **Cards**. In the new version, we expanded the list of features for this element. The Cards element now supports the cross-filtering and grouping mode with dashboard elements. In addition, it is now possible to select a preset color collection to apply to cards or get this collection from the element style. You can do this using the **Series Color** property.

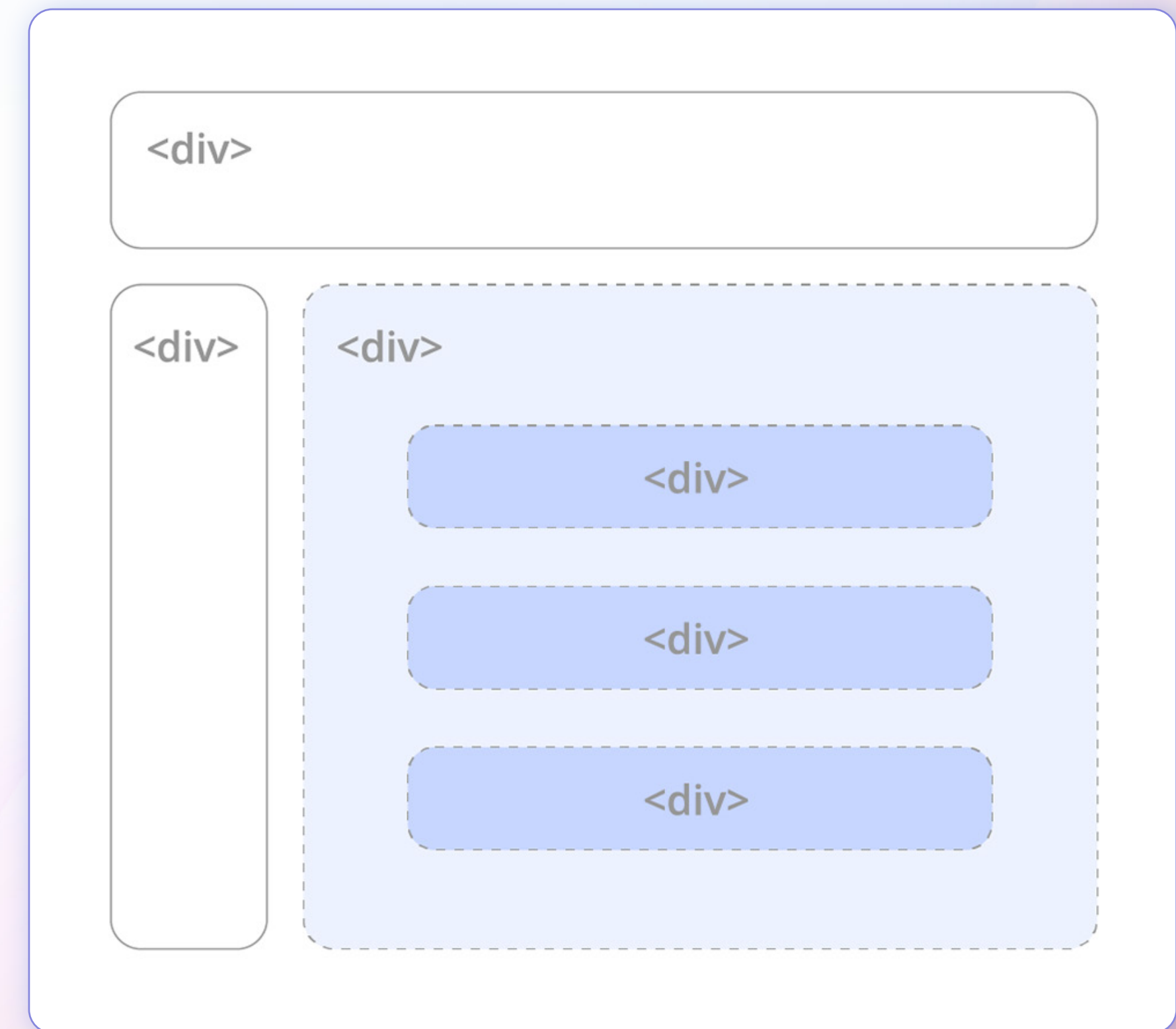




# HTML preview modes



Starting with version 2022.3, you can define an **HTML preview mode** in the **Preview Settings** of a report. It's relevant when creating a report in the desktop version of the report designer and its further viewing in a web browser. In earlier versions of the Web viewer, by default, you could use the **TABLE** mode to display reports, which had certain restrictions. You could switch to the **DIV** mode only when using the viewer option. Earlier, a selected mode was applied to all reports which were displayed in it, and the report template didn't have any preview settings. Now a report creator can define the view mode as DIV or TABLE.



# New features for Maps



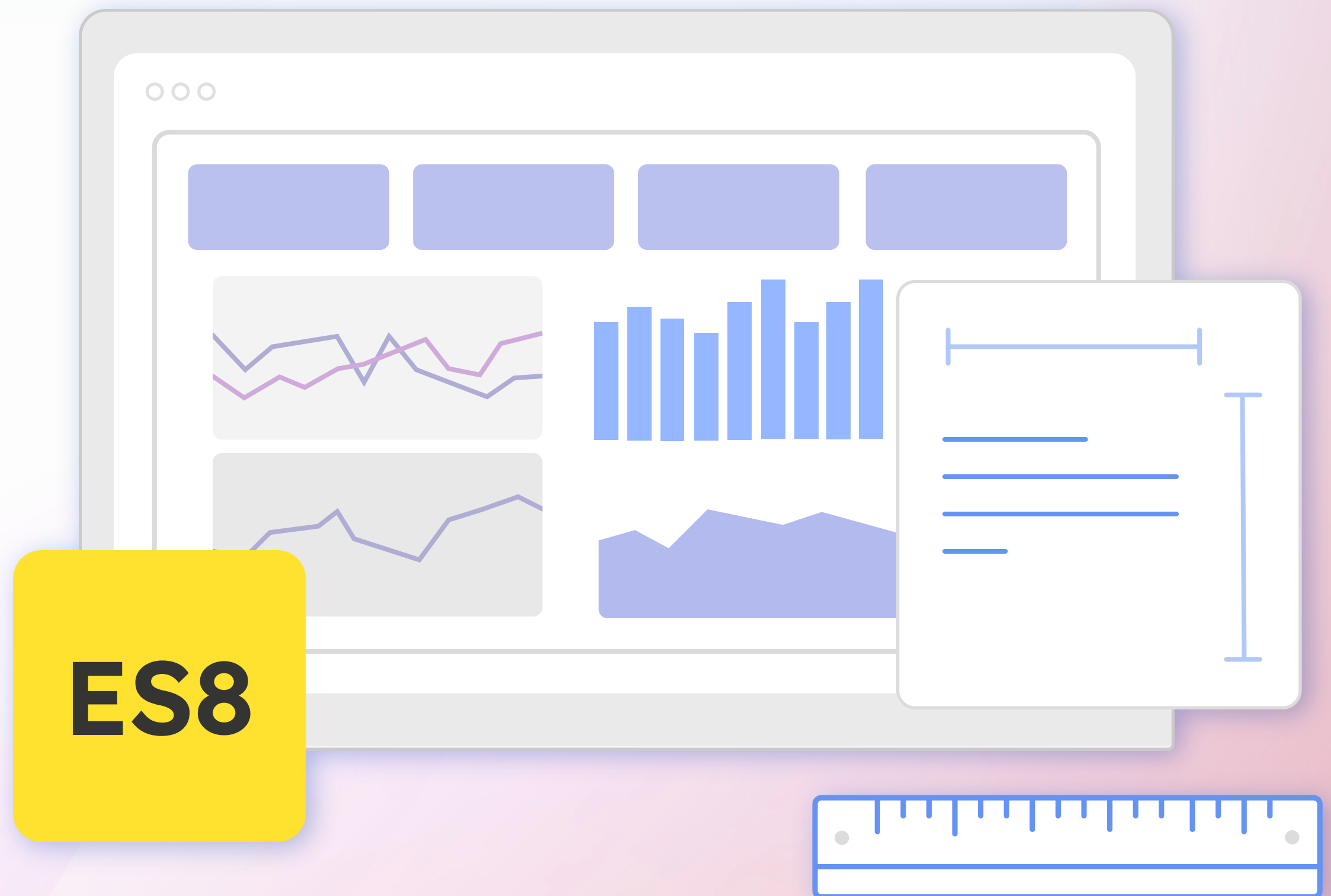
The new functionality in version 2022.3 also applies to maps in reports and GIS maps in dashboards. For the Map component in reports, the support of data drill down has been implemented. When clicking on a geographic object on the map, you can open another report page. For GIS maps in dashboards, the ability to specify a custom provider-server by URL, which considerably increases the flexibility of using this dashboard element in custom applications, is added.



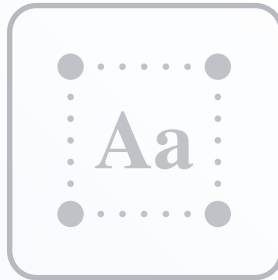


# ECMAScript 2017

Starting with the 2022.3 version, **Reports.JS** and **Dashboards.JS** products are switching to **ECMAScript 2017** language standard. We have carried out load testing of the report generator under the new version, and according to their results, the processing of a multi-page report accelerated by **more than 25%**. New ES2017 features remove barriers to our product development and allow us to keep up with the times.



# Optimizations for OTF fonts



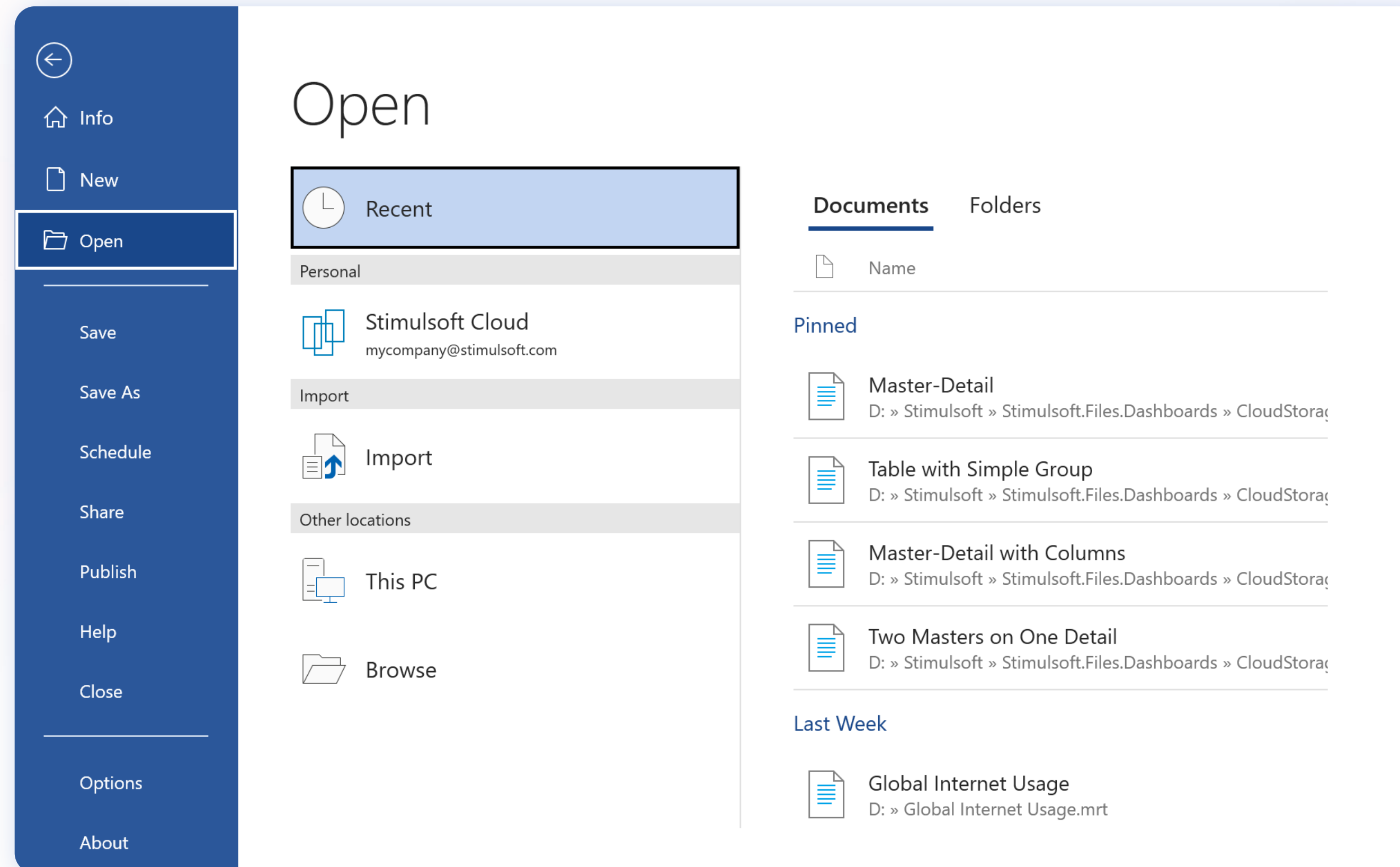
In the previous version, when exporting a report to PDF and in cases of using a \*.otf custom font in reports, the font file was completely embedded into the document, which, in turn, could significantly increase the size of a PDF file. We have done some optimizations for \*.otf fonts, which will result in integrating only those font characters that are needed to render the text in the current report when embedding the font in the document. In many cases, this will reduce the size of the PDF file. For \*.ttf fonts, this optimization has been implemented in previous versions.





# New features of the WPF designer

In this release, we have added the Code tab for the WPF v2 report designer. This tab is an analog of the same tab in the Stimulsoft Designer. By default, this tab is disabled, and you may find the parameter to enable it in the context menu of the header page of the report template. In addition, in the report designer, we have completely redesigned the menu for opening and saving reports, having adapted them to the Microsoft Office style. The menu includes options for searching, fixing frequently used reports, specifying local storage, etc.







## Contact Information

Phone:

+372-5839-3004  
+44-20-32875081  
+1-314-2663473

Email:

info@stimulsoft.com  
sales@stimulsoft.com  
support@stimulsoft.com

Telegram:

t.me/stimulsoft

Skype:

stimulsoft

